



Friendly
Development
& Innovation

2022

PRODUCT

CATALOGUE





CONTENTS

ABOUT FDI	4
About us.....	5
READERS AND KEYPADS	12
About readers, keypads, receivers.....	13
Badge/key readers.....	14
All badge/key readers.....	20
Other readers.....	22
Keypads.....	23
Receivers.....	25
ACCESS CONTROLLERS	26
About access controllers.....	27
Easy Door Range.....	29
iPassan range.....	32
HALL NOTICE BOARDS	36
About lobby screens.....	37
Digital notice boards.....	38
Interfaces for managing notice boards.....	39
CREDENTIALS	40
About credentials.....	41
Proximity keys.....	42
Remote controls.....	45
ISO cards.....	46
BLE credits.....	47
DOOR ENTRY PANELS	48
About 2-Smart door entry panels.....	49
2-Smart door entry panels.....	50
Housing with protective hood and hoods.....	51
ACCESSORIES	52
About accessories.....	53
Push buttons.....	54
Metal enclosures.....	55
USB encoders and programming terminals.....	56
Electromagnetic locks.....	57
Brackets.....	58
Other accessories.....	59
CONTACT	60

ABOUT US

FDI, EXPERT IN ACCESS CONTROL MANAGEMENT

FDI, an Urmet Group subsidiary since 2000, exports its products across 35 countries around the globe and rolls out its activities across 3 key sectors:

- Access control and intercom end products
- Hand-on support for bespoke projects, from designing electronic circuits through to producing access management solutions
- IoT products via the Yokis brand.

**1989**

Company created

150

Employees

€30m

Turnover

2mDwellings and
equipped offices

MARKETS

Thanks to its expertise in access control and intercom solutions, FDI proposes single-site systems and networked multi-site integrated systems for hubs; residential, collective (small-scale, medium-scale and large-scale collective) as well as for the tertiary sector in France and abroad.

ABOUT FDI



INDUSTRIAL EQUIPMENT AND FACILITIES

FDI is located in Cholet in the Maine-et-Loire department (49) in France where it boasts a design and manufacturing facility covering 7,900 m² with 4,000 m² dedicated to production and storage. Every year, FDI installs and brazes over 100 million components from 3,000 different references on average using its exclusive industrial equipment:

- 3 latest-generation SMC (Surface Mounted Components) lines from MYCRONIC (6 installation machines);
- 3 DEK screen printing machines with automatic soldering paste thickness inspection;
- 3 energy-efficient 13-zone ERSA melting furnaces;
- 1 2D AOI machine;
- 2 ERSA selective wave solder machines equipped with two single-wave nitrogen solder pots;
- 2 CNC milling machines for machining and engraving plastics, aluminium and brass;
- 1 YAG (Rofin Basel) laser marking machine.



PRODUCTS: ELECTRONIC EQUIPMENT FOR ACCESS CONTROL, INTERCOM AND HOME-AUTOMATION SYSTEMS



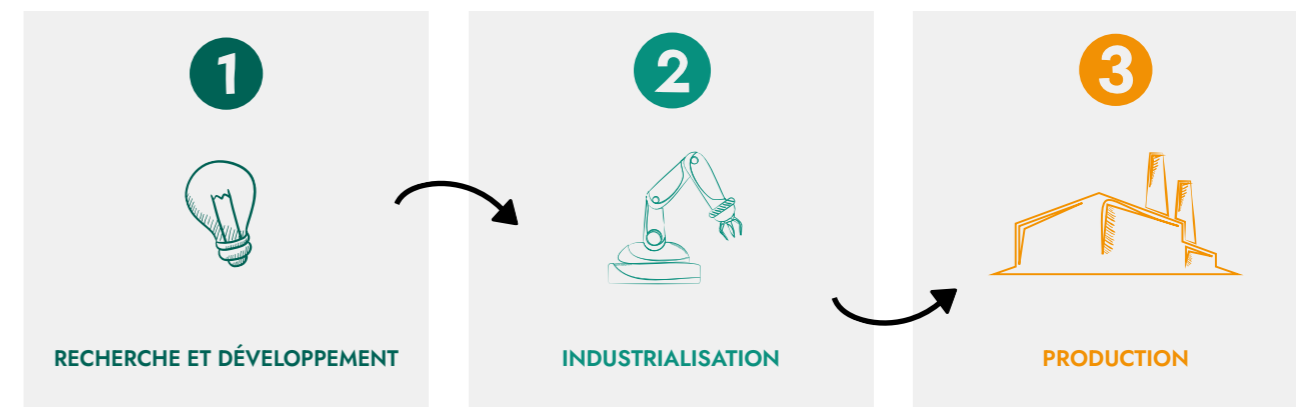
FDI designs and produces access management software and mobile solutions:

- Access controllers;
- Readers and keypads;
- Door entry panels;
- Keys;
- Lobby screens;
- Home automation (YOKIS brand).



BESPOKE SOLUTIONS: DESIGN AND MANUFACTURE OF ACCESS MANAGEMENT SYSTEMS

FDI offers you tailored support from design through to manufacturing (electronic equipment, electronic circuits, etc.). FDI can also customize its catalogue products and provide you with developments to meet your specific needs.

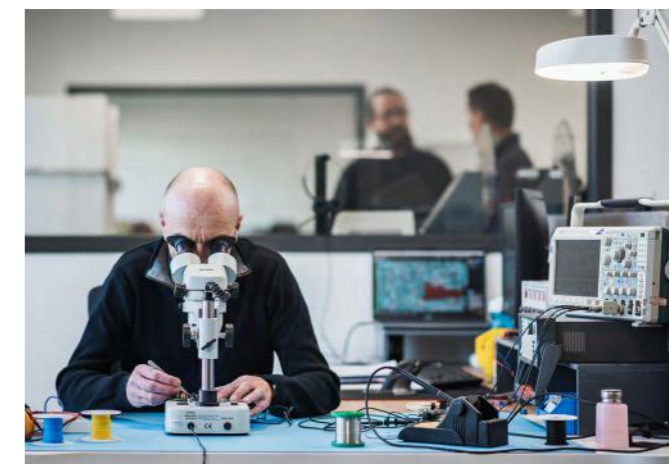


OUR ENGINEERING AND ACCESS MANAGEMENT EXPERTISE

FDI, electronic engineering expert

FDI masters 3 key areas of expertise, ensuring every project is brought to a successful conclusion:

- Research, development and electronic engineering
- Industrializing access control, intercom and IoT/home automation systems
- Producing electronic assemblies and sub-assemblies (EMS) 4.0



Research and development, a dedicated design office

To be constantly at the cutting edge of innovation, FDI invests in its R&D department every year. The design office, comprising 70 engineers and split into 4 areas of expertise, works on all access control and intercom systems as well as micro-modules for home automation and IoT.

Hardware

Designing electronic circuits

Embedded software

Software embedded in electronic circuits

Development of software and apps

Cloud, back-end, web, mobile and PC systems

Innovation unit

State-of-the-art product watch and development

EMS 4.0 industrialization and production

FDI masters the industrialization of electronic assemblies designed to be integrated in access control, intercom, proximity reading and IoT products.

FDI ensures that each product is reviewed by the mechanical design office between its industrialization and production phases.

And, last but not least, FDI aims to meet functional and in situ test requirements for each access control, intercom, home automation/IoT system.



HUMAN RESOURCES AND VALUES

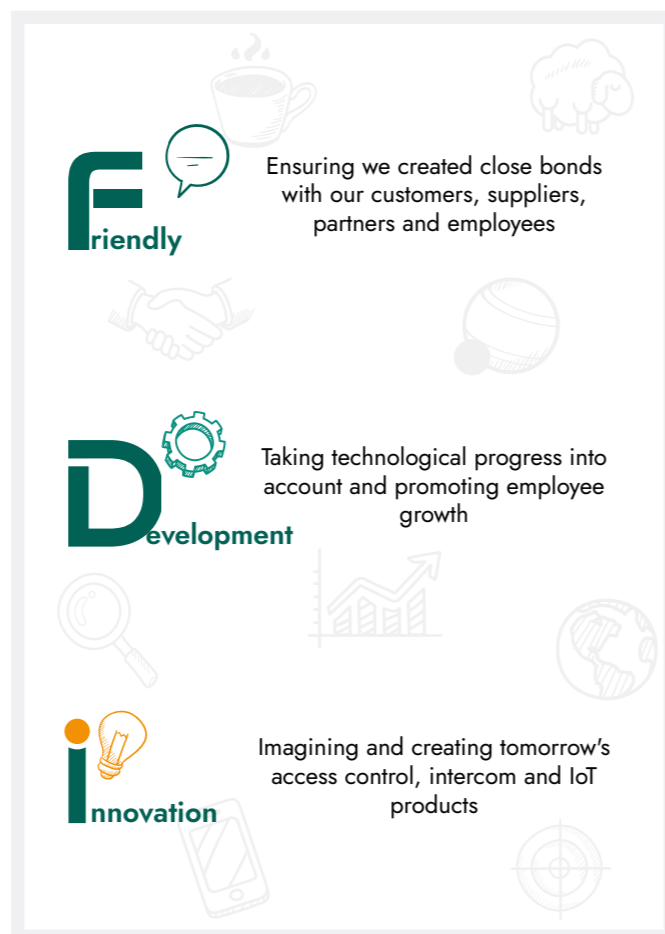
Our raison d'être

The technologies that we master along with our integrated design office, French production and industry mean we have the know-how and human assets to be recognized experts in a wide array of fields.

FDI invests permanently in its human skills and technical resources and ensures its raison d'être is forever its guiding thread: Friendly Development & Innovation:

Our values and commitments

Here, at FDI, we're convinced that the success of each project hinges on our employees' professional fulfilment. As such, our vision is driven by values of caring, conviviality and flexibility in the workplace.



FRIENDLY

Friendliness, cohesion and humility

Customer focus guides and motivates all our teams and all our projects. Our goal: to ensure customer relationships and needs are at the heart of our processes to make them accessible, agile and to ensure grassroots communication. As we're convinced that our teams' wellness and cohesion are real catalysts for involvement and motivation, our employees benefit from a prime working environment: co-working space, on-site restaurant, relaxation area, green spaces, etc.

DEVELOPMENT

Complex projects with high added value

FDI works using agile methods and is able to take action throughout the product lifecycle. Our goal: to develop products that fulfil our customers' requirements perfectly, whether they're catalogue- or bespoke-developed. As FDI is convinced that the growth of its human assets is what makes its projects and solutions successful, the Company provides continuous training and creates career opportunities to motivate its employees and support them in developing in their jobs.



INNOVATION

Tomorrow's access control, intercom and IoT products

As such, innovation and the use of new technologies are at the forefront of our business. FDI focuses on imagining state-of-the-art products through its dedicated design office, through its hardware, software, embedded electronics engineers, developers and its innovation unit. These high-added-value projects ensure we are able to uphold our level of expertise, involve our employees and propose state-of-the-art products.

TIMELINE

<p>1989 – FDI MATELEC created</p> <p>FDI MATELEC, creator and manufacturer of access control products, masters every phase of its projects from design through to production.</p>	<p>2000 – FDI MATELEC becomes part of the URMET Group</p> <p>FDI bought by the Urmét Group, leader on the intercom, access control solution, home automation and video surveillance market.</p>	<p>2004 – FDI MATELEC activities internationalized</p> <p>FDI has been exporting its products across the globe since 2004 (Australia, Belgium, Spain, UK, etc.)</p>
<p>2014 – YOKIS brand bought</p> <p>FDI diversified its activities by buying YOKIS, manufacturer of digital micro-modules for lighting, dimming and roller shutters with over 20 years' experience.</p>	<p>2021 – FDI MATELEC moved to Cholet</p> <p>After several months of work, FDI moved into its new headquarters in the Cormier industrial park in Cholet, Maine-et-Loire department (49), France.</p>	<p>2021 – Management team reorganized</p> <p>Pascal PERRIN, Head of the Residential Division for the Urmét Group in France became FDI MATELEC Managing Director along with David RABIER and Hervé GAZEAU, Directors of Operations.</p>
		<p>2022 – FDI MATELEC becomes FDI</p> <p>FDI MATELEC becomes FDI and highlights its mission: Friendly Development & Innovation, promoted through the redesign of its graphic charter, its logo and its website in 2022.</p>

FRIENDLY & COMMITTED

For several years, FDI has been committed to an organizational, industrial and competitive approach with a growing consideration of its customers and their requirements, always in compliance with the regulatory framework imposed by the laws and markets in force. To achieve this, FDI focuses on 4 areas of commitment:

Economic commitments

Promote local suppliers. Rationalize purchases and expenses: packaging, container rotation, flow optimization, energy savings, etc.

Environmental commitments

Limit the footprint our activity leaves on our immediate environment. Develop FDI products while limiting their overall footprint on the environment.

Social commitments

Roll out a dynamic, responsible employment policy. Ensure our employees' health, safety and wellness. Promote training for young people and develop skills in-house.

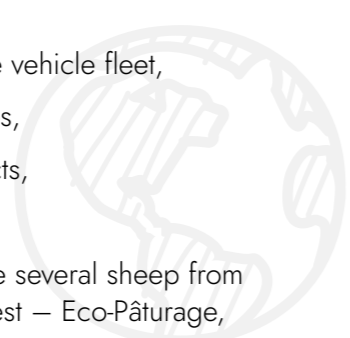
Societal commitments

Respect and promote ethics in the workplace and invite FDI partners to comply with this approach. Pay attention to FDI stakeholders issues and take them into consideration.

FDI sensitive to its impact on the environment

FDI is sensitive to and concerned about the footprint its activity leaves on the environment. To this end, FDI has decided to:

- ┌ Create green roofing
- ┌ Install waste sorting bins and reduce the number of office waste baskets,
- ┌ Introduce waste electrical and electronic equipment sorting (WEEE): FDI is a founder member of the WEEE Pro recycling network,
- ┌ Review the share of thermal vehicles in the vehicle fleet,
- ┌ Install charging stations for electric vehicles,
- ┌ Reuse packaging for packaging its products,
- ┌ Limit energy consumption,
- ┌ Opt for eco-pastoralism and accommodate several sheep from the French association Les Moutons de l'Ouest – Eco-Pâturage,
- ┌ Set up beehives.



A dynamic, responsible employment policy

FDI has chosen to pursue a dynamic and responsible employment policy and to:

- ┌ Be an active player when hiring,
- ┌ Ensure it offers more young people contracted internships,
- ┌ Train work-study students by meeting the 5% staff quota,
- ┌ Develop partnerships with schools,
- ┌ Promote inclusion by integrating workers with disabilities in our teams 3 days every month.



Support for professional integration and local partnerships

ADAPEI 49 - EA AVRILLE - Avrillé (49), France | 15+ years

The Association Départementale de Parents et Amis des Personnes Handicapées Mentales (Departmental Association of Friends and Parents of People with Mental Disabilities) welcomes and accompanies people with disabilities in the fields of education, care, training, adapted work and accommodation. It also advocates the rights and interests of people with disabilities, their families and their relatives.

ADAPEI 49 - EA CHOLET, ODEA - Cholet (49), France | 15+ years

The Entreprise Adaptée de Cholet (Cholet Adapted Business) employs 43 workers with disabilities. Its activities revolve around 5 key sectors: a central kitchen, in partnership with RESTORIA, electrical wiring for industry, construction, pad printing for advertising and industrial objects, order picking for industrial joinery and door and window framing items, and making a team with a technical supervisor available in a Cholet company.

ESATCO VENDEE – Les Herbiers (85), France | Since 2017

As a player in the social and solidarity economy, ESATCO Vendée's mission is to build positive, lasting relationships between partner companies and provide workers with disabilities with high quality skills and know-how.

APAHRC – ESAT ARC-EN-CIEL – Cholet (49), France | Since 2014

APAHRC provides balance between promotional initiatives, by helping adults with disabilities develop their autonomy and ensuring they become fully-fledged citizens, and protective initiatives by helping them fulfil themselves and have quality life.

ESAT – APF LE CORMIER – Cholet (49), France | 15+ years

ESAT – APF Le CORMIER focuses on ensuring that people who are temporarily or permanently unable to work are integrated in social and professional life in the general production sector or in an adapted company.



CSR certifications

FDI's approach regarding its positioning, its initiatives and its commitments has been acknowledged and certified in line with the international ISO 9001.2015 since March 2011. Moreover, FDI designs eco-friendly products, which have been ISO 14001.2015 since March 2014.



FDI's Vigik-labelled products

FDI is a member of the group of professionals behind the Vigik label. FDI products are Vigik-approved and door entry panels comply fully with the French Act on accessibility for people with disabilities. The Vigik system enables professionals (operators and service providers such as: the post office, Enedis (French electricity), GRDF (French gas), press deliverers, lift operators, plumbers, electricians, etc.) to gain secure access to the common areas of buildings.



FDI awarded the French Fab label

FDI joined the French Fab label in 2021. This is a group of Made-in-France industrial firms, created in 2017 by Bruno Lemaire, French Minister for the Economy, Finance and Recovery, with the aim of bringing industrials together around shared values. French Fab unites businesses, industrial sites and economic players in France that wish to develop French industry.



ABOUT READERS, KEYPADS, RECEIVERS

CHARACTERISTICS AND ADVANTAGES

FDI offers 2-wire and Wiegand readers with the same design and key characteristics:

- 2-wire readers deliver the highest level of security with iPassan, Easy Door et Transit+ controllers.
- Wiegand readers work over open, standard protocols: they are configurable so they can be combined with controllers on the market.

2-wire readers

Novel design featuring enhanced technology and secure reader-controller communication:

- AES 128 bit encryption via 2-wire communication
- Complete monitoring of your setup
- IK10 and IP65 (except for Alpha and mushroom readers)

Standard proximity ID information can be read (Mifare Classic®, Mifare Plus®, Mifare DESFire®) as well as Bluetooth® virtual credits. Secure access with pin & prox. dual authentication.



2-WIRE BUS

Encrypted for secure reader-controller communication



FIRMWARE UPGRADE

Via the 2-wire communication



COMPLETE MONITORING

Of the setup (wiring, shortcuts, etc.)



EASY, EFFECTIVE SETUP

Via the 2-wire wiring

Wiegand readers

Even if the access controller is provided by another supplier, FDI readers and keys can be used. Reader behaviour is totally customizable via the dedicated online software then transferred to the Wiegand reader via a dedicated key.



EASY, EFFECTIVE SETUP



VERSATILE SOLUTION

SECTION CONTENTS

- Badge/key readers
- All badge/key readers
- Other readers
- Keypads
- Receivers

READERS AND KEYPADS

BADGE/KEY READERS

P40 READERS



Key characteristics

- Size (L x W x H): 90 mm x 47 mm x 23 mm
- Power supply: 12V (supplied by the controller via the 2-wire connection)
- Read distance: 40 mm (Mifare® Classic) - BLE: based on settings
- Operating temp.: -20°C to +60°C | storage temperature: -20°C to +70°C
- Weight: 65 g
- Technology: 13.56 MHz (Mifare® Classic, Mifare® Plus and may be opened up to Mifare® DESFire) + BLE (Bluetooth Low Energy)

Product variations

FD-020-220 | 2-WIRE P40 READER

- Max. cable distance: 100 m - 8/10 AWG20
- Protocol: 2-wire

The P40 proximity reader is designed for the iPassan, Easy Door and Transit+ controllers. This reader is based on FDI protocol and delivers a high level of security.

FD-020-224 | WIEGAND & RS485 P40 READER

- Max. cable distance: 100 m - 8/10 AWG20 // 1,000 m – 6/10 AWG24 RS485
- Protocol: Wiegand / RS485

Bi-protocol key reader: thanks to a switch, it switches from Wiegand to RS485 protocol. By default, this reader processes Mifare® Plus keys/passes (FD-020-224) and it has a 58-bit Wiegand output. Its behaviour and output format can be configured.

FD-020-244 | TITANIUM P40 READER



- Size (L x W x H): 90 mm x 47 mm x 23 mm
- Power supply: 12V (supplied by the controller via the 2-wire connection)
- Max. cable distance: 100 m - 8/10 AWG20
- Read distance: 40 mm (Mifare® Classic) - BLE: based on settings
- Operating temp.: -20°C to +60°C | storage temperature: -20°C to +70°C
- Weight: 65 g
- Protocol: 2-wire
- Technology: 13.56 MHz (Mifare® Classic and Mifare® Plus and DESFire) + BLE (Bluetooth Low Energy)

The Titanium P40 proximity reader is a 2-wire key reader developed for the scalable iPassan, Easy Door and Transit+ access controllers. This reader is based on FDI secure protocol.

P80 READERS



Key characteristics

- Size (L x W x H): 90 mm x 85 mm x 25 mm
- Power supply: 12V (via the controller)
- Read distance: 40 mm (Mifare® Classic) - BLE: based on settings
- Operating temp.: -20°C to +60°C | storage temperature: -20°C to +70°C
- Weight: 85 g
- Technology: 13.56 MHz (Mifare® Classic and Mifare® Plus and DESFire) + BLE (Bluetooth Low Energy)

Product variations

FD-020-221 | 2-WIRE P80 READER

- Max. cable distance: 100 m - 8/10 AWG20
- Protocol: 2-wire

The P80 reader is designed for the iPassan, Easy Door and Transit+ controllers. It is based on FDI protocol and delivers a high level of security.

FD-020-225 | WIEGAND & RS485 P80 READER

- Max. cable distance: 100 m - 8/10 AWG20 // 1,000 m – 6/10 AWG24 RS485
- Protocol: Wiegand / RS485

Bi-protocol reader with configurable output format that default processes Mifare® Plus (GB-010-200) keys/passes.

PK80 READERS



Key characteristics

- Size (L x W x H): 90 mm x 85 mm x 25 mm
- Power supply: 12V (via the controller)
- Read distance: 40 mm (Mifare® Classic) - BLE: based on settings
- Operating temp.: -20°C to +60°C | storage temperature: -20°C to +70°C
- Weight: 85 g
- Technology: 13.56 MHz (Mifare® Classic, Mifare® Plus and may be opened up to Mifare® DESFire) + BLE (Bluetooth Low Energy)

Product variations

FD-020-222 | 2-WIRE PK80 READER

- Max. cable distance: 100 m - 8/10 AWG20
- Protocol: 2-wire

This reader is based on FDI secure protocol and delivers a high level of security.

FD-020-226 | WIEGAND & RS485 PK80 READER

- Max. cable distance: 100 m - 8/10 AWG20 // 1,000 m – 6/10 AWG24 RS485
- Protocol: Wiegand / RS485

Bi-protocol reader that default processes FDI Mifare® Plus (FD-010-200) keys/passes.

ALPHA READERS



Key characteristics

- Size (L x W x H): 125 mm x 90 mm x 26 mm
- Power supply: 12V (via the controller)
- Read distance: 30 mm (Mifare® Classic) - 20 mm (Mifare® Plus) - BLE: 15 m based on phone and settings
- Operating temp.: -20°C to +50°C | storage temperature: -20°C to +70°C
- Weight: 150 g
- Technology: 13.56 MHz (Mifare® Classic, Mifare® Plus and may be opened up to Mifare® DESFire) + BLE (Bluetooth Low Energy)

Product variations

FD-020-227 | 2-WIRE ALPHA READER

- Max. cable distance: 100 m
- Protocol: 2-wire

The Alpha reader is designed for iPassan, Easy Door and Transit+ access controllers. This reader delivers a high level of security and is designed to integrate the Urmet Alpha modular door entry panel system.

FD-020-230 | WIEGAND & RS485 ALPHA READER

- Max. cable distance: 100 m (Wiegand) - 1,000 m (RS485)
- Protocol: Wiegand / RS485

This reader can switch from Wiegand to RS485. It is designed to integrate the Urmet Alpha modular door entry panel system.

FD-020-234 | ELEKTA GLASS READER



- Size (L x W x H): 45 mm x 70 mm x 15 mm
- Power supply: 12V (supplied by the controller via the 2-wire connection)
- Max. cable distance: 100 m
- Read distance: 30 mm (Mifare® Classic) - 20 mm (Mifare® Plus) - BLE: 15 m based on phone and settings
- Operating temp.: -20°C to +50°C | storage temperature: -20°C to +70°C
- Weight: 55 g
- Protocol: 2-wire
- Technology: 13.56 MHz (Mifare® Classic, Mifare® Plus and may be opened up to Mifare® DESFire) + BLE (Bluetooth Low Energy)

The FD-020-234 reader is designed to integrate the Urmet Elekta Glass door entry panel system and can be combined with iPassan, Easy Door and Transit+ solutions. This reader is based on FDI 2-wire protocol that delivers high security to it.

ELEKTA STEEL READERS



Key characteristics

- Size (L x W x H): 45 mm x 70 mm x 15 mm
- Power supply: 12V (via the controller)
- Read distance: 30 mm (Mifare® Classic) - 20 mm (Mifare® Plus) - BLE: 15 m based on phone and settings
- Operating temp.: -20°C to +50°C | storage temperature: -20°C to +70°C
- Weight: 55 g
- Technology: 13.56 MHz (Mifare® Classic, Mifare® Plus and may be opened up to Mifare® DESFire) + BLE (Bluetooth Low Energy)

Product variations

FD-020-232 | 2-WIRE ELEKTA STEEL READER

- Max. cable distance: 100 m
- Protocol: 2-wire

Designed for iPassan, Easy Door, Transit+ and to integrate Urmet Elekta Steel door entry panel systems.

FD-020-233 | WIEGAND & RS485 ELEKTA STEEL READER

- Max. cable distance: 100 m (Wiegand) - 1,000 m (RS485)
- Protocol: Wiegand / RS485

This reader is designed for Urmet Elekta Steel door entry panel systems and can switch from Wiegand to RS485 via a switch.

FD-020-175 | T25 MUSHROOM READER



- Size (L x W x H): 43 mm x 7 mm x 34 mm
- Power supply: 12V (supplied by the controller via the 2-wire connection)
- Max. cable distance: 100 m
- Operating temp.: -20°C to +70°C
- Protocol: 2-wire
- Technology: 13.56 MHz (Mifare® Classic and Mifare® Plus)

This reader, designed for iPassan and Easy Door systems, is compact, vandal-proof and waterproof.

SINTHESI STEEL READERS



Key characteristics

- Size (L x W x H): 85 mm x 85 mm x 16 mm
- Power supply: 12V (via the controller)
- Read distance: 30 mm (Mifare® Classic) - 20 mm (Mifare® Plus) - BLE: 15 m based on phone and settings
- Operating temp.: -20°C to +50°C | storage temperature: -20°C to +70°C
- Weight: 250 g
- Technology: 13.56 MHz (Mifare® Classic, Mifare® Plus and may be opened up to Mifare® DESFire)

Product variations

FD-020-236 | 2-WIRE SINTHESI STEEL READER

- Max. cable distance: 100 m
- Protocol: 2-wire

This reader is designed for iPassan, Easy Door and Transit+ and integrates the Sinthesi Steel door entry panel system.

FD-020-237 | WIEGAND & RS485 SINTHESI STEEL READER

- Max. cable distance: 100 m (Wiegand) - 1,000 m (RS485)
- Protocol: Wiegand / RS485

Designed for Urmet Sinthesi Steel door entry panel and can switch from Wiegand to RS485.

SINTHESI S2 READERS



Key characteristics

- Size (L x W x H): 85 mm x 85 mm x 16 mm
- Power supply: 12V (via the controller or third-party supply if RS485)
- Read distance: 30 mm (Mifare® Classic) - 20 mm (Mifare® Plus) - BLE: 15 m based on phone and settings
- Operating temp.: -20°C to +50°C | storage temperature: -20°C to +70°C
- Weight: 250 g
- Technology: 13.56 MHz (Mifare® Classic, Mifare® Plus and may be opened up to Mifare® DESFire)

Product variations

FD-020-238 | 2-WIRE SINTHESI S2 READER

- Max. cable distance: 100 m
- Protocol: 2-wire

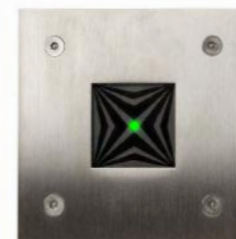
This reader is designed for iPassan, Easy Door and Transit+ and is based on FDI 2-wire protocol.

FD-020-239 | WIEGAND & RS485 SINTHESI S2 READER

- Max. cable distance: 100 m (Wiegand) - 1,000 m (RS485)
- Protocol: Wiegand / RS485

Designed for Urmet Sinthesi S2 door entry panel and can switch from Wiegand to RS485.

STAINLESS STEEL READERS



Key characteristics

- Size (L x W x H): 78 mm x 43 mm x 16 mm
- Power supply: 12V (via the controller or third-party supply if RS485)
- Read distance: 30 mm (Mifare® Classic) - 20 mm (Mifare® Plus) - BLE: 15 m based on phone and settings
- Operating temp.: -20°C to +50°C | storage temperature: -20°C to +70°C
- Weight: 430 g
- Technology: 13.56 MHz (Mifare® Classic, Mifare® Plus and may be opened up to Mifare® DESFire)

Product variations

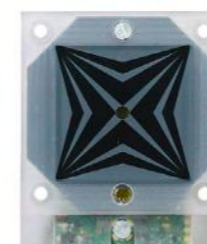
FD-020-242 | 2-WIRE STAINLESS STEEL READER

- Max. cable distance: 100 m
- Protocol: 2-wire
- Reader delivered with its mortice-mount housing.

FD-020-243 | WIEGAND & RS485 STAINLESS STEEL READER

- Max. cable distance: 100 m (Wiegand) - 1,000 m (RS485)
- Protocol: Wiegand / RS485

OEM READERS



Key characteristics

- Size (L x W x H): 60 mm x 60 mm x 16 mm
- Power supply: 12V (via the controller or third-party supply if RS485)
- Read distance: 30 mm (Mifare® Classic) - 20 mm (Mifare® Plus) - BLE: 15 m based on phone and settings
- Operating temp.: -20°C to +50°C | storage temperature: -20°C to +70°C
- Weight: 52 g
- Technology: 13.56 MHz (Mifare® Classic, Mifare® Plus and may be opened up to Mifare® DESFire)

Product variations







FD-020-240 | 2-WIRE 40 X 40 OEM READER

- Max. cable distance: 100 m
- Protocol: 2-wire

FD-020-241 | WIEGAND & RS485 40 X 40 OEM READER

- Max. cable distance: 100 m (Wiegand) - 1,000 m (RS485)
- Protocol: Wiegand / RS485

ALL BADGE/KEY READERS

PROTOCOLS & TECHNO.	P40 READER 90 x 47 x 23 mm IP65 - IK10	P80 READER 90 x 85 x 25 mm IP65 - IK10	PK80 READER 90 x 85 x 25 mm IP65 - IK10	ALPHA READER	P60 READER 78 x 78 x18 mm	ELEKTA GLASS READER 45 x 70 x 15 mm
Product visuals						

2SMART - 2-wire readers

13.56 MHz Mifare® Plus BLE (iPassan) DESFire	FD-020-220 FD-020-244 GB-020-220*	FD-020-221	FD-020-222	FD-020-227		FD-020-234
---	---	------------	------------	------------	--	------------

RS485 readers

13.56 MHz Mifare® PlusBLE DESFire	FD-020-224 GB-020-224*	FD-020-225	FD-020-226	FD-020-230		
--	---------------------------	------------	------------	------------	--	--

WIEGAND and Dataclock readers

125 KHz W 26b	FD-020-224 GB-020-224*	FD-020-225	FD-020-226	FD-020-230		
125 KHz W 30b						
125 KHz W 34b					FD-020-183 FD-020-182	
Dataclock 125 KHz						
13.56 MHz Mifare® Plus DESFire	FD-020-224 GB-020-224*	FD-020-225	FD-020-226	FD-020-230		

*References beginning with "GB" are available without the FDI logo

ELEKTA STEEL READER 45 x 70 x 15 mm	MUSHROOM READER 43 x 7 x 34 mm IP65 - IK10	SINTHESE STEEL S2 READER 85 x 85 x 16 mm	STAINLESS STEEL READER 78 x 43 x 16 mm	OEM READER 60 x 60 x 16 mm	VANDAL- PROOF READER 100 x 45 x 16 mm IP54 - IK09	SURF.MOUNTED READER 78 x 43 x 17 mm IP54 - IK07
						

FD-020-232	FD-020-175	FD-020-236 FD-020-238	FD-020-242	FD-020-240		
------------	------------	--------------------------	------------	------------	--	--

FD-020-233		FD-020-237 FD-020-239	FD-020-243	FD-020-241		
------------	--	--------------------------	------------	------------	--	--

FD-020-233					FD-020-090	FD-020-087
					FD-020-085	FD-020-083
					FD-020-091	
					FD-020-089	FD-020-082
FD-020-233		FD-020-237 FD-020-239		FD-020-241		FD-020-217 (W34/58)

OTHER READERS

BIOMETRIC READERS

FD-020-121 | BIOMETRIC READER



- Size (L x W x H): 190 mm x 70 mm x 45 mm
- Power supply: 12-24V AC/DC (400 mA at peak)
- Operating temp.: -20°C to +50°C | storage temperature: -20°C to +70°C
- Weight: 480 g
- Protocol: Wiegand
- Technology: 13.56 MHz Mifare® Classic

Multi-technology reader: fingerprint and proximity. Enhanced security via dual ID. Fingerprints not stored by the reader. Access granted by the controller (up to 100,000 fingerprints).

FD-020-173 | BIOMETRIC ENROLMENT READER



- Size (L x W x H): 175 mm x 100 mm x 150 mm
- Power supply: 5V via USB
- Operating temp.: -10°C to +50°C | storage temperature: -20°C to +70°C
- Weight: 815 g (including metal stand)
- Protocol: USB
- Technology: 13.56 MHz Mifare® Classic

Multi-technology reader: fingerprint and proximity. Enhanced security via dual ID. Fingerprints not stored by the reader. Access granted by the controller (up to 100,000 fingerprints).

FD-020-122 | QR CODE READER



- Size (L x W x H): 132 mm x 88 mm x 21 mm
- Power supply: 12V DC supplied by the controller
- Max. cable distance: 100 m
- Operating temp.: -20°C to +60°C | storage temperature: -20°C to +80°C
- Weight: 200 g
- Protocol: Wiegand
- Technology: 13.56 MHz (Mifare® Classic)

Dual-technology reader: QR code and proximity. It is programmed using a configuration QR code. Reader designed for indoor use only, incompatible with Mifare® Plus keys/ passes and cards.

KEYPADS

K-PAD KEYPADS



- Size (L x W x H): 120 mm x 83 mm x 36 mm
- Capacity: 100 access codes from 3 to 8 digits
- Programming: via master code
- Operating temp.: -20°C to +60°C
- Keys: back-lit blue

GB-060-118 | K-PAD KEYPAD

- Power supply: 12-24 VAC/DC
 - Time delay: 1 to 99 s (monostable or bistable)
 - Material: metallic-grey polycarbonate
- Keypad designed for automated systems (alarms, gates).

GB-060-218 | K-PAD PROTECT+ KEYPAD

- Power supply: 12-24 VAC/DC
 - Time delay: 1 to 99 s (monostable or bistable)
 - Material: Zamak housing
- Extremely resistant keypad thanks to its zamak (zinc/ aluminium alloy) housing and is vandal-proof (IK10).

GB-060-318 | HF K-PAD KEYPAD

- Power supply: 2 LR03 batteries
 - Time delay: adjustable via the receiver
 - Material: black polycarbonate
- The GB-060-118 wireless keypad is combined with the FDI GB-150-011 receiver.

GB-060-319 | K-PAD KEYPAD AND RECEIVER KIT



K-PAD KEYPAD

- Size (L x W x H): 120 mm x 83 mm x 36 mm
- Capacity: 100 access codes from 3 to 8 digits
- Programming: via master code
- Operating temp.: -20°C to +60°C
- Keys: back-lit blue
- Power supply: 2 LR03 batteries
- Time delay: adjustable via the receiver
- Material: metallic-grey polycarbonate

RECEIVER

- Size (L x W x H): 120 mm x 100 mm x 40 mm
- Power supply: 12/24V AC or DC
- Max. cable distance: 100 m
- Capacity: 100 access codes from 3 to 8 digits
- Time delay: adjustable from 1 to 99 s
- Programming: remote (encoder and an Internet connection required)

MORTICE-MOUNT STAINLESS STEEL KEYPADS



Key characteristics

- Size (L x W x H): 135 mm x 100 mm x 43 mm
- Capacity: 22 access codes from 3 to 8 digits in standalone version
- Operating temp.: -10°C to +60°C
- Material: stainless steel
- Keys: back-lit blue + Braille

Product variations

FD-060-238 | I3 BACK-LIT KEYPAD (STANDALONE)

- Power supply: 12V AC or DC
- Time delay: 1 to 99 seconds
- Programming: via master code

The FDI I3 keypad is easy to wire: 2 wires for the electric strike, 2 wires for the power supply and 2 wires for the button.

FD-025-178 | I3 BACK-LIT KEYPAD (READER KEYPAD)

- Power supply: 12V (supplied by the controller via the 2-wire connection)
- Time delay: defined via access control
- Programming: defined via access control

Keypad compatible with iPassan and Transit+ controllers.

60-030-277 | HOUSING WITH PROTECTIVE HOOD



- Size (L x W x H): 135 mm x 100 mm x 60 mm
- Mortice-mount
- Finish: stainless steel

The 60-030-277 housing with protective hood is stainless steel housing with protective hood for a connected keypad.

RECEIVERS

HF RECEIVERS



Key characteristics

- Size (L x W x H): 155 mm x 91 mm x 34 mm
- Power supply: 12V to 24V
- Loop input (4) 4 wires + 2 Wiegand gnd output (4) 4 x 2 wires + 2 gnd
- Reception distance: Up to 50 m in open-field conditions
- Operating temp.: -20°C to +60°C

Product variations

FD-020-185 | HF WIEGAND RECEIVER

- Protocol: Wiegand
- Frequency: 433 MHz

Receiver designed to work with 34-bit Wiegand controllers. The receiver hosts 4 Wiegand outputs and is compatible with the following bi-technology remote controls:

- TM04 (125 KHz tag included) / 433 MHz yellow keys
- TELROL (13.56 MHz Mifare® tag included) / 433 MHz

FD-020-190 | 2-WIRE HF RECEIVER

- Protocol: 2-wire
- Frequency: 433 MHz

Receiver compatible with the following bi-technology remote controls:

- TM04 (125 KHz tag included) / 433 MHz yellow keys
- TELROL (13.56 MHz Classic Mifare® tag included) / 433 MHz

FD-020-186 | HF WIEGAND RECEIVER

- Protocol: Wiegand
- Frequency: 868 MHz

Receiver designed to work with 34/58-bit Wiegand controllers. The receiver hosts 4 Wiegand outputs and is compatible with the following bi-technology remote controls:

- TELROL (13.56 MHz Mifare® tag included) / 868 MHz

FD-020-191 | 2-WIRE HF RECEIVER

- Protocol: 2-wire
- Frequency: 868 MHz

Receiver designed to work with 34/58-bit Wiegand controllers. The receiver hosts 4 Wiegand outputs and is compatible with the following bi-technology remote controls:

- TM04 (125 KHz tag included) / 433 MHz yellow keys
- TELROL (13.56 MHz Mifare® tag included) / 868 MHz

ACCESS CONTROLLERS

ABOUT ACCESS CONTROLLERS

CHARACTERISTICS AND ADVANTAGES

Whatever scope and level of security you require, FDI has access control solutions tailored to every situation. Standalone management is suitable for small buildings as it doesn't require any special tools or skills. Easy Door's disconnected mode is perfect for sites where doors are separate from each other and where it's not economically-feasible to set up cables to create connected access control. iPassan is the most comprehensive access control system: it offers advanced features and a wide range of integrations.

Transit+

Transit+ is a standalone access control system. Each controller manages its two doors without communicating with the other controllers. Nonetheless, lists of keys/passes / users can be created and transferred to the various controllers via the app.

Easy Door

Easy Door is an offline access control range. The manager declares their doors, apartments, users and passes/keys via online software on easydoorcontroller.com. Keys/passes are encoded via the desktop encoder, then delivered to occupants. Whenever these keys/passes are shown to site readers, the data is automatically interpreted by the controllers and receivers.

From the software-stance, doors are centrally managed, so we consider this as a virtual network.

iPassan

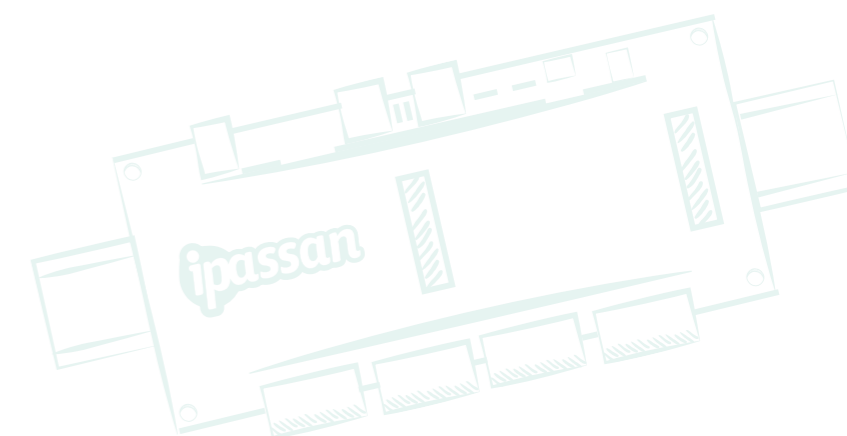
iPassan is a connected access control system addressing all sorts of uses. The system is able to process sites with anything from one to an unlimited number of doors, readers, inputs and outputs.

The free server can be local or SaaS (ipassan.com). It manages an unlimited number of sites, boasts advanced features and offers a wide choice of integrations.

A mixed controller network can be set up: comprising IP & RS485.

SECTION CONTENTS

- ┆ Transit+ range
- ┆ Easy Door range
- ┆ iPassan range



TRANSIT+ RANGE

FD-105-001 | 2-DOOR TRANSIT+ CONTROLLER



- Size (L x W x H): 200 mm x 90 mm x 34 mm | with cover: 210 mm x 145 mm x 65 mm
- Power supply: 12VDC - up to 0.5A with 2 readers
- Reception distance: 100 m
- Time delay: adjustable from 1 to 99 s
- Programming: via Bluetooth and free app
- Operating temp.: -20°C to +50°C
- Protocol: 2-wire

The Transit+ controller is particularly suitable for small-scale residential buildings comprising one or two doors. As this controller offers basic features, it is easy to set up and use.

The readers combined with it work in a totally secure way with a FDI proprietary bus and are compatible with FDI 13.56 MHz keys/passes (Mifare® Classic and Mifare® Plus) and access codes whenever the controller is combined with the PK80 reader-keypad.

Settings and users are programmed via Bluetooth connectivity natively integrated in the controller and via an app to be installed, downloadable for free to Android mobiles. This app manages user and key/pass lists that can also be transferred to one or more controllers. Communication is wireless. As such, user and key/pass lists can be copied and pasted from one controller to another if ever the setup is extended.

Worth noting: when the phone has a NFC antenna, keys/passes can be added to the app by simply swiping them across the back of the phone.

Compatible products:

- FD-020-220, FD-020-221 & FD-020-222 readers
- FD-020-191 HF receiver
- Mifare® Classic and Mifare® Plus keys
- FD-010-172 (Mifare® Classic) and FD-010-203 (Mifare® Plus) remote controls

EASY DOOR RANGE

GB-140-089 | EASY DOOR CONTROLLER

Easy Door controllers are managed in read/write mode via an encoder and software www.easydoorcontroller.com. When a key is shown to the reader, information contained in the key can be transferred to the controller. Manage your keys/passes for up to 50 doors with this free, easy-to-use web software. For this management mode, you just need to:

1. Enter the reference number of the controller installed
2. Create an account on www.easydoorcontroller.com
3. Programme the keys using the USB encoder that registers the number of locks accessible in the key.

To remotely delete permissions for one or several keys, you just need to cancel the key in question on the website and programme a new key which, when used for the first time with the controller, will immediately block the old one.



- Size (L x W x H): 70 mm x 75 mm x 19 mm
- Power supply: 12V to 24V AC or DC
- Reception distance: 100 m
- Time delay: adjustable from 1 to 99 s
- Programming: remote (encoder and an Internet connection required)
- Operating temp.: -20°C to +60°C
- Protocol: 2-wire

Easy Door is a door access controller for medium-scale collective structures. It can be managed in standalone mode or read-write mode. In standalone mode, it manages one door and 1,500 keys/passes. Easy Door Controller is easy to set up (just 2 wires to the reader) and to programme. Key/pass additions, cancellations and updates are performed using a master key/pass.

Given its size, the Easy Door Controller is perfectly tailored to be set up behind a door entry panel. As such, you can add access control to your intercom system.

EASY DOOR KITS



Easy Door kits are intended to make setting up your access control easier.

The controller and its reader let you control your access whilst the encoder lets you encode keys/passes remotely so they only work for the doors you wish.

The encoder is supplied with its USB cable and is automatically recognized by your PC. The online Easy Door programming software www.easydoorcontroller.com is free and easy to use.

Product variations

GB-140-167 | EASY DOOR KIT VANDAL-PROOF READER

- Contents: 1 GB-140-089 Easy Door controller + 1 FD-020-086 vandal-proof reader + 10 Mifare® Classic keys (FD-010-146 assorted colours)
- Protocol: 2-wire
- Technology: 13.56 MHz Mifare® Classic

GB-140-168 | EASY DOOR KIT T25 READER

- Contents: 1 GB-140-089 Easy Door controller + 1 FD-020-175 T25 reader + 10 Mifare® Classic keys (FD-010-146 assorted colours)
- Protocol: 2-wire
- Technology: 13.56 MHz Mifare® Classic

GB-140-169 | EASY DOOR KIT P40 READER

- Contents: 1 GB-140-089 Easy Door controller + 1 FD-020-220 P40 reader + 10 Mifare® Plus keys (FD-010-158 assorted colours)
- Protocol: 2-wire
- Technology: 13.56 MHz Mifare® Plus

GB-140-170 | EASY DOOR STARTER KIT P40 READER

- Contents: 1 GB-140-089 Easy Door controller + 1 FD-020-220 P40 reader + 10 Mifare® Plus keys (FD-010-158 assorted colours) + 1 USB encoder
- Protocol: 2-wire
- Technology: 13.56 MHz Mifare® Plus

GB-140-171 | EASY DOOR KIT TITANIUM P40 READER

- Contents: 1 GB-140-089 Easy Door controller + 1 FD-020-244 Titanium P40 reader + 10 Mifare® Plus keys (FD-010-158 assorted colours)
- Protocol: 2-wire
- Technology: 13.56 MHz Mifare® Plus

GB-150-011 | EASY DOOR RECEIVER



- Size (L x W x H): 120 mm x 100 mm x 40 mm
- Power supply: 12V to 24V AC or DC
- Reception distance: 100 m
- Time delay: adjustable from 1 to 99 s
- Programming: remote (encoder and an Internet connection required)
- Operating temp.: -20°C to +60°C
- Protocol: 2-wire
- Technology: 868 MHz

Easy Door is a HF access control system designed for small-scale residential structures. This product is an access controller and a receiver. It is designed for 2 doors and can manage up to 2,000 users.

This product can be used remotely from the location it is installed in (this is known as Virtual Network mode) or on site (standalone mode).

The USB encoder and an Internet connection are required to access the dedicated programming site for remote configuration: www.easydoorcontroller.com.

Step-by-step:

- Enter the number of the controller installed (specified on the cover)
- Register your site on www.easydoorcontroller.com
- Programme keys/remote control using the encoder and register one of several door numbers to be key/remote control enabled.

To remotely delete permissions for one or several keys, you just need to cancel the key in question on the website and programme a new key which, when used for the first time with the controller, will immediately block the old one.

IPASSAN RANGE

IPASSAN CONTROLLERS

iPassan is an IP access control system specially designed for medium to large-scale residential and tertiary buildings. iPassan controllers store all the information required and boast embedded intelligence enabling local decision-taking.



Key characteristics

- Time delay: adjustable from 1 to 99 s
- Programming: remotely via the cloud or locally via downloadable software
- Operating temp.: -20°C to +50°C | storage temperature: -20°C to +70°C

Product variations

FD-125-001 | POE 24/48V 4-DOOR IPASSAN CONTROLLER

- Size (L x W x H): 200 mm x 90 mm x 34 mm | with cover: 210 mm x 145 mm x 65 mm
- Power supply: PoE or 24/48VDC PSU - up to 1A with 6 readers
- Protocol: 2-wire / RS485
- Weight: 595 g

FD-125-002 | 12V 4-DOOR IPASSAN CONTROLLER

- Size (L x W x H): 200 mm x 90 mm x 34 mm | with cover: 210 mm x 145 mm x 65 mm
- Power supply: 12VDC - up to 1A with 6 readers
- Protocol: 2-wire / RS485
- Weight: 595 g

FD-125-003 | POE 24/48V 2-DOOR IPASSAN CONTROLLER

- Size (L x W x H): 200 mm x 90 mm x 34 mm | with cover: 210 mm x 145 mm x 65 mm
- Power supply: 12V to 24V AC or DC
- Protocol: Wiegand / RS485
- Weight: 595 g

FD-125-004 | 12V 2-DOOR IPASSAN CONTROLLER

- Size (L x W x H): 200 mm x 90 mm x 34 mm | with cover: 210 mm x 145 mm x 65 mm
- Power supply: 12VDC - up to 1A with 6 readers
- Protocol: Wiegand / RS485
- Weight: 595 g

FD-125-010 | IPASSAN CONTROLLER 2-DOOR OPTION

- Size (L x W x H): 198 mm x 80 mm x 30 mm
- Power supply: via the controller
- Protocol: 2-wire / RS485
- Weight: 142 g

FD-125-011 | IPASSAN CONTROLLER 4-DOOR OPTION

- Size (L x W x H): 198 mm x 80 mm x 30 mm
- Power supply: via the controller
- Protocol: Wiegand / RS485
- Weight: 205 g

ADDITIONAL IPASSAN INPUT AND OUTPUT OPTIONS



Key characteristics

- Operating temp.: -20°C to +50°C | storage temperature: -20°C to +70°C
- Maximum capacity: up to ten additional input or output modules (i.e. 220 additional inputs/outputs) per controller

Extension modules can be connected to additional modules or directly to the iPassan controller.

Product variations

FD-125-015 | IPASSAN 10-INPUT MODULE

- Size (L x W x H): 200 mm x 90 mm x 34 mm | with cover: 210 mm x 145 mm x 65 mm
- Power supply: 12V/24V AC/DC
- Controller and auxiliary communication: RS485
- Mounting: wall-mounted or on a DIN rail
- Weight: 247 g
- Protocol: RS485

This module connects to the iPassan controller via the RS485 bus and manages 10 inputs. Up to 10 FD-125-020 input modules can be connected (maximum total capacity of 220 inputs).

FD-125-016 | IPASSAN 10-OUTPUT MODULE

- Size (L x W x H): 200 mm x 90 mm x 34 mm | with cover: 210 mm x 145 mm x 65 mm
- Power supply: 12V/24V AC/DC
- Controller and auxiliary communication: RS485
- Mounting: wall-mounted or on a DIN rail
- Weight: 313 g
- Protocol: RS485

This module connects to the iPassan controller via the RS485 bus and manages 10 outputs. Up to 10 FD-125-021 output modules can be connected, i.e. maximum total capacity of 220 outputs.

FD-125-020 | IPASSAN 12-INPUT MODULE

- Size (L x W x H): 198 mm x 70 mm x 30 mm
- Power supply: 12V (via the controller)
- Mounting: on the base controller or on the extension
- Weight: 149 g

This extension module is used to manage 12 inputs. It connects to an iPassan controller, a 10-input or 10-output module, by just clipping it on top.

FD-125-021 | IPASSAN 12-OUTPUT MODULE

- Size (L x W x H): 198 mm x 70 mm x 30 mm
- Power supply: 12V (via the controller)
- Mounting: on the base controller or on the extension
- Weight: 227 g

This extension module is used to manage 12 outputs. It connects to an iPassan controller, a 10-input or 10-output module, by just clipping it on top. This extension module is particularly suitable for managing lifts for example.

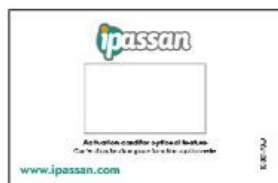
FD-500-570 | 2VOICE INTERFACE FOR IPASSAN CONTROLLERS



- Size (L x W x H): 70 mm x 95 mm x 75 mm
- Power supply: 48V supplied via the 2Voice bus
- Communication via the iPassan controller auxiliary interface: RS485
- Mounting: wall-mounted or on a DIN rail
- Weight: 110 g

The 2Voice interface is designed to collect data transmitted on the bus between an Urmet 2Voice entry panel and the apartments called. This module offers intercom monitoring such as call log, lift and entrance door management via iPassan Manager.

ACTIVATION CARDS FOR IPASSAN



iPassan is a modular access control solution that can be combined with additional features such as lift management, or combined with open readers, ANPR, room booking, etc. Activation cards are required to enable these different features.

FD-050-091 | KONE 50-FLOOR ACTIVATION CARD

FD-050-092 | 100-FLOOR

FD-050-093 | 200-FLOOR

The iPassan controller provides a dry contact per floor and per lift. Kone COP (Car Operating Panel) integration is based on the same model as traditional lifts (readers located in the lift car), but here access control / lift communication is based on TCP/IP. A 200-floor activation card covers the needs of a controller managing 4 lifts over 50 floors.

FD-050-095 | OPEN READER ACTIVATION CARD

FDI keys, passes, cards and remote controls use Mifare® Plus tags secured by an AES 128 bit key. The readers process this security and ignore other keys/passes. When it is necessary to reuse existing Mifare® keys/passes (Light, Classic, Plus or DESFire), the FD-050-095 activation card removes the security from the readers so that these keys/passes can be used (1 card = 6 readers max.).

FD-125-094 | ANPR CAMERA ACTIVATION CARD

iPassan integrates with Dahua (only for Australia) and Innova number plate recognition cameras. These cameras dialogue via IP with the controller and transmit the number plate in full. The FD-050-094 activation card can host up to four plate reading cameras on a single controller. Plate reading is performed automatically: as soon as the plate is read, its ID is transmitted to the controller that permits or refuses access to the vehicle.

FD-050-096 | 2VOICE INTERFACE ACTIVATION CARD

Door access control is integrated in iPassan by adding a FD-500-570 interface. The FD-050-096 activation card also enables integrating intercom in lifts. A card is required per controller managing the lift.

FD-050-097 | BOOKING MANAGEMENT ACTIVATION CARD

iPassan software can be used to manage resources and equipment for residents, employees and visitors. Managers and even users themselves can book resources for specified time slots via the dedicated web portal: rooms, tennis courts, coworking spaces, visitor parking spaces, equipment, etc. An FD-050-097 activation card is required to enable booking management for a site.

FD-050-099 | KONE DOP ACTIVATION CARD

Unlike a traditional lift where the access control reader is located in the car, here access control is performed upstream via the KONE DOP (Destination Operating Panel) activation card. As such, a group comprising several lifts serves the floors. Each floor hosts a terminal where users show their key/pass and enter their destination floor: the console then tells them which lift to use. With this system, the lift is more efficient and more energy-efficient as it guides the users. A software licence is required for access control-lift integration.

FD-050-101 | OTIS EMS 50-FLOOR ACTIVATION CARD

FD-050-102 | 100-FLOOR

FD-050-103 | 200-FLOOR

Several access profiles can be specified with iPassan and access can be limited to specific floors based on the profile. The iPassan controller provides a dry contact per floor and per lift. OTIS EMS integration is based on the same model as traditional lifts, but here access control/ lift communication is based on TCP/IP. A 200-floor activation card covers the needs of a controller managing 4 lifts over 50 floors.

ACCESS CONTROLLERS

FD-125-098 | INNOVA ANPR ACTIVATION CARD

iPassan integrates with the Innova number plate recognition solution. The cameras dialogue via IP with the controller and transmit the number plate in full. The iPassan event tracking feature is also used to list the plates of all vehicles that arrive at an access control point. The FD-050-098 activation card can host up to four plate reading cameras on a single controller.

FD-050-100 | ONITY ACTIVATION CARD

Onportal is access control software for hotel rooms that manages communal areas of the site (car park, entrance hall, resources, lifts, etc.). When users and keys/passes are imported via Onportal to the iPassan database, they are automatically given a default access profile. An activation card is required per site.

FD-050-104 | OTIS COMPASS ACTIVATION CARD

Unlike a traditional lift, access control is performed upstream of the car. Each floor hosts a terminal where users show their key/pass and enter their destination floor: the console then tells them which lift to use. The lift is more efficient and more energy-efficient. Reference FD-050-104 can manage up to 6 terminals.

FD-050-105 | IPERCOM ACTIVATION CARD

Urmet Ipercom intercom is integrable with iPassan. Door access control is natively integrated in iPassan, but intercom-to-lift integration via access control requires the FD-050-105 activation card.

HALL NOTICE BOARDS

ABOUT LOBBY SCREENS...

CHARACTERISTICS AND ADVANTAGES

Lobby screens can display texts, images and videos to real-time communicate effectively in a digitized way to residents, visitors, customers, etc.:

- Easy communication via ipnoticeboard.com
- Content management via the secure ipnoticeboard.com site.
- Paper notice boards can be removed.
- Time-saving for the manager, no need to travel to the site.
- Remote updating via ipnoticeboard.com, accessible for free online.
- Notice boards can be set up in: meeting rooms, residential building entrance halls, shopping centres, etc.



COST, TIME & ENERGY- SAVING AND ECO- FRIENDLY

No need for paper



A FAST, EASY WAY TO COMMUNICATE

Real-time remote control via
ipnoticeboard.com



FILES SUPPORTED

PDF, photos, videos, etc.



STURDY AND VANDAL- PROOF

2 mm metallic housing



UNLIMITED NUMBER OF BOARDS ON THE CLOUD



CLOUD-MANAGED

SECTION CONTENTS

- Digital notice boards
- Interfaces for managing notice boards



DIGITAL NOTICE BOARDS

Do you need to manage a notice board located in a building hall, a meeting room or a shopping centre?

This IP notice board is the perfect solution. It can be updated remotely and can display your media wherever you wish. Once the notice board installed, just log on to www.ipnoticeboard.com and manage communications across all notice boards from your office. You can display:

- ▮ Images (JPG, JPEG, PNG),
- ▮ Videos (AVI, MPEG, WMV),
- ▮ Texts from PowerPoint, Excel or Word presentations, PDFs and texts edited in the software.

Cost, time & energy-saving and eco-friendly: no need for paper or to go on site!

FD-500-481 | IP NOTICE BOARD



- ▮ Size (L x W x H): 540 mm x 360 mm x 50 mm
- ▮ Screen size: 17 inches
- ▮ Resistance: vandal-proof (laminated glass and 2 mm metal housing)
- ▮ Display: portrait format
- ▮ Display time: from 1 to 99s with start and end dates defined
- ▮ Programming: remote (via secure web software)
- ▮ Power supply: 24V DC 5A
- ▮ Use: indoors

INTERFACES FOR MANAGING NOTICE BOARDS

Do you need to manage a notice board located in a building hall, a meeting room or a shopping centre?

Thanks to this HDMI interface, you can transform any monitor into an IP notice board that you can update remotely. Once the interface installed, just log on to www.ipnoticeboard.com and manage communications across all notice boards from your office. You can display:

- ▮ Images (JPG, JPEG, PNG),
- ▮ Videos (AVI, MPEG, WMV),
- ▮ Texts from PowerPoint, Excel or Word presentations, PDFs and texts edited in the software.

Cost, time & energy-saving and eco-friendly: no need for paper or to go on site!

FD-500-488 | INTERFACE FOR MANAGING HDMI NOTICE BOARDS



- ▮ Size (L x W x H): 198 mm x 120 mm x 40 mm
- ▮ Screen resolution: adjustable
- ▮ Display time: from 1 to 99s with start and end dates defined
- ▮ Programming: remote (via secure web software)
- ▮ Connection: to Internet and to the notice board HDMI port

CREDENTIALS

ABOUT CREDENTIALS

CHARACTERISTICS AND ADVANTAGES

Proximity keys

Proximity keys are IP68 and IK08 certified (waterproof and shock-resistant). They have a metal ring so they can be attached to a key ring and contain a non-editable 8-character hexadecimal code. Key uniqueness guaranteed. The code is etched to simplify its programming and ID.

Remote controls

With integrated proximity and four buttons, the remote controls work for a host of situations. You no longer need to have a remote control and a key/pass for example as a remote control button can control your entrance gate, a second button your garage door, etc. and remote-control proximity is used for pedestrian access.

ISO cards

ISO proximity cards have a unique serial number and are factory-coded. Cards can be customized with logo and/or photo.

K-App

Bluetooth® credits can be used with the FDI app called K-App and with the P40, P80 and PK80 range of readers. Bluetooth® access is highly-secure and enables access via Android and iOS smartphones.



PROXIMITY ACCESS



REMOTE ACCESS



PHYSICAL CREDENTIALS

Keys/passes, remote controls, ISO cards, etc.



DIGITIZED CREDENTIALS

BLE (Bluetooth Low Energy) credits and K-App



AVAILABLE AS A KIT

10-key packs, available with related reader and controller

SECTION CONTENTS

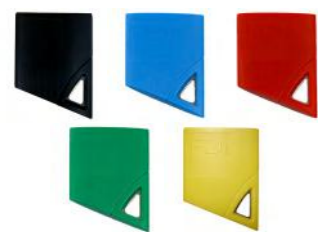
- Proximity keys
- Remote controls
- ISO cards
- BLE credits



PROXIMITY KEYS

MIFARE® CLASSIC PROXIMITY KEYS

Proximity keys are IP68 and IK08 certified (waterproof and shock-resistant). They have a metal ring so they can be attached to a key ring and contain a non-editable 14-character hexadecimal code. Key uniqueness guaranteed. The code is etched to simplify its programming and ID. Keys can be customized with screen printing or cover moulding.



Key characteristics

- Size (L x W x H): 49 mm x 36 mm x 7 mm
- Alphanumeric number: 8-character number etched and counterbored
- Operating temp.: -25°C to +60°C
- Frequency: 13.56 MHz (Mifare® Classic)

Product variations

FD-010-010 | BLACK PROXIMITY KEY WITHOUT LOGO

- Colour: black
- FD-010-010 keys are compatible with all FDI 13.56 MHz readers.

FD-010-028 | BLUE PROXIMITY KEY

- Colour: blue
- FD-010-028 keys are compatible with all FDI 13.56 MHz readers.

FD-010-029 | RED PROXIMITY KEY

- Colour: red
- FD-010-029 keys are compatible with all FDI 13.56 MHz readers.

FD-010-030 | GREEN PROXIMITY KEY

- Colour: green
- FD-010-030 keys are compatible with all FDI 13.56 MHz readers.

FD-010-078 | YELLOW PROXIMITY KEY

- Colour: yellow
- FD-010-078 keys are compatible with all FDI 13.56 MHz readers.

GB-010-010 | BLACK PROXIMITY KEY WITH LOGO

- Colour: black
- GB-010-010 keys are compatible with all FDI 13.56 MHz readers.

MIFARE® PLUS PROXIMITY KEYS



Key characteristics

- Size (L x W x H): 49 mm x 36 mm x 7 mm
- Alphanumeric number: 8-character number etched and counterbored
- Operating temp.: -25°C to +60°C
- Frequency: 13.56 MHz (Mifare® Plus)
- Recommended for Easy Door, iPassan and Transit+ systems.

Product variations

FD-010-200 | BLACK PROXIMITY KEY WITHOUT LOGO

- Colour: black
- Compatible with FDI 13.56 MHz readers.

GB-010-228 | BLUE PROXIMITY KEY

- Colour: blue
- Compatible with FDI 13.56 MHz readers.

GB-010-229 | RED PROXIMITY KEY

- Colour: red
- Compatible with FDI 13.56 MHz readers.

GB-010-230 | GREEN PROXIMITY KEY

- Colour: green
- Compatible with FDI 13.56 MHz readers.

GB-010-278 | YELLOW PROXIMITY KEY

- Colour: yellow
- Compatible with FDI 13.56 MHz readers.

GB-010-200 | BLACK PROXIMITY KEY WITH LOGO

- Colour: black
- Compatible with all FDI 13.56 MHz readers.

PACKS OF 10 PROXIMITY KEYS



Key characteristics

- Size (L x W x H): 49 mm x 36 mm x 7 mm
- Pack: 10 keys (2 keys of each colour)
- Colours: black - blue - red - green - yellow
- Operating temp.: -25°C to +60°C

Product variations

FD-010-146 | PACK OF 10 PROXIMITY KEYS

- Alphanumeric number: 8-character number etched and counterbored
- Frequency: 13.56 MHz (Mifare® Classic)
- Compatible with FDI 13.56 MHz readers.

FD-010-158 | PACK OF 10 PROXIMITY KEYS

- Alphanumeric number: 14-character number etched and counterbored
- Frequency: 13.56 MHz (Mifare® Plus)
- Compatible with FDI 13.56 MHz Mifare® Plus readers and recommended for Easy Door and iPassan.

FD-010-080 | MASTER PROXIMITY KEY



- Size (L x W x H): 49 mm x 36 mm x 7 mm
- Colour: black
- Alphanumeric number: 8-character number etched and counterbored
- Operating temp.: -25°C to +60°C
- Frequency: 13.56 MHz (Mifare® Classic)

FD-010-080 proximity keys are to be formatted as a master key when used for the first time and are compatible with all FDI 13.56 MHz readers.

FD-010-142 | EVENT MANAGEMENT KEY



- Size (L x W x H): 49 mm x 36 mm x 7 mm
- Colour: black
- Alphanumeric number: 8-character number etched and counterbored
- Operating temp.: -25°C to +60°C
- Frequency: 13.56 MHz (Mifare® Classic)

FD-010-080 proximity keys are to be formatted as a master key when used for the first time and are compatible with all FDI 13.56 MHz readers.

GB-010-012 | GREY PROXIMITY KEY



- Size (L x W x H): 49 mm x 36 mm x 7 mm
- Colour: grey
- Alphanumeric number: 8-character number etched and counterbored
- Operating temp.: -25°C to +60°C
- Frequency: 125 KHz

GB-010-012 proximity keys are compatible with all FDI 125 KHz readers.

REMOTE CONTROLS

With integrated proximity and four buttons, FDI remote controls work for a host of situations. You no longer need to have a remote control and a key/pass for example as a remote control button can control your entrance gate, a second button your garage door, etc. and proximity can be used for pedestrian access.

Remote controls are designed to last, thanks to a metal eyelet for attaching them to key rings, and their serial number is etched on a recessed area. The code is etched to simplify its programming and ID. Remote control uniqueness guaranteed.



Key characteristics

- Size (L x W x H): 79 mm x 38 mm x 12 mm
- Power supply: 3V flat lithium battery
- Average battery lifetime: 22,000 taps
- Alphanumeric number: 8-character number etched and counterbored
- Operating temp.: -20°C to +60°C

Product variations

FD-010-169 | YELLOW-KEY REMOTE CONTROL

- Colour: black, yellow
- Frequency: 433 MHz / 125 KHz

FD-010-171 | GREY-KEY REMOTE CONTROL

- Colour: black, grey
- Frequency: 433 MHz / 13.56 MHz (Mifare® Classic)

FD-010-172 | BLUE-KEY REMOTE CONTROL

- Colour: black, blue
- Frequency: 433 MHz / 13.56 MHz (Mifare® Classic)

FD-010-203 | BLUE-KEY REMOTE CONTROL

- Colour: black, blue
- Frequency: 868 MHz / 13.56 MHz (Mifare® Plus)

FD-010-204 | GREY-KEY REMOTE CONTROL

- Colour: black, grey
- Frequency: 868 MHz / 13.56 MHz (Mifare® Plus)

ISO CARDS

ISO CARD PACKS

ISO proximity cards have a unique serial number and are factory-coded. They can be customized with logo and/or photo. These cards host a Mifare® Plus smart card (chip) that guarantees card uniqueness and prevents cloning thanks to its AES 128 bit encryption and to FDI controller/reader protocol.



Key characteristics

- Size (L x W x H): 85 mm x 54 mm x 1 mm
- Colour: white
- Material: PVC
- Format: credit card
- Card number: registered on the card for programming and ID

Product variations

FD-010-051 | PACK OF 10 ISO CARDS

- Frequency: 13.56 MHz (Mifare® Classic)

FD-010-170 | PACK OF 10 ISO CARDS

- Frequency: 125 KHz

FD-010-175 | PACK OF 10 ISO CARDS

- Frequency: 13.56 MHz (Mifare® Plus)

FD-010-176 | EVENT MANAGEMENT ISO CARD

- Frequency: 13.56 MHz (Mifare® Plus)

BLE CREDITS

Bluetooth® credits are used with the K-App dedicated to the P40, P80 and PK80 range of readers. BLE credits are used to assign long-distance, permanent or temporary proximity access based on the number of credits allocated to each user.

Bluetooth® access is highly-secure and enables access via Android and iOS smartphones.

FD-010-213 | BLE CREDIT (BLUETOOTH LOW ENERGY)



- Encryption: AES 128 bit between the smartphone and the reader
- Mode: Replay-proof
- Fast setup
- Key validity: even if the smartphone is lost or replaced

Specifications

Access options:

- 1 FD-010-213 credit: proximity access for 24 hours maximum
- 2 FD-010-213 credits: proximity access for 14 days maximum
- 5 FD-010-213 credits: permanent proximity access
- 20 FD-010-213 credits: permanent long-distance (remote) access

Compatible products

FDI Bluetooth® keys are compatible with the iPassan solution managed by iPassan Manager software.

P40, P80 and PK80 proximity readers are compatible.

Downloading apps

Our apps are downloadable via App Store and via Google Play. Scan the QR codes below for direct access:



DOOR ENTRY PANELS



ABOUT 2-SMART DOOR ENTRY PANELS

CHARACTERISTICS AND ADVANTAGES

2-Smart door entry panels are also integrated in the Urmet 2-Voice system via an exclusive system.

New design featuring enhanced technology:

- Customized smart card (chip) list testing
- Display management: information display and name programming
- Voice synthesis
- Optimized setup and servicing
- Disability Act-compliant magnetic loop and back-lit Braille keys
- Easy firmware updating
- Hinged mortice-mount housing with vertical adjustment
- Installation depth of 60 mm
- IK08 and IP54 resistance
- Integrated reader



SECURITY

Door relays managed by the controller



DISPLAY MANAGEMENT

Default names and second language can be configured



ALPHANUMERIC CALLING CODE MANAGEMENT



CAMERA

120-degree angle



CAN BE CUSTOMIZED

Third and fourth buttons (direct call, etc.)



EVENT LOG

Monitoring and reporting of all events



DDA-COMPLIANT

Integrated loop, bright 4" TFT display, Braille buttons



UP TO 4,000 APARTMENTS

SECTION CONTENTS

- 2-Smart door entry panels
- Housing with protective hood and hoods

2-SMART DOOR ENTRY PANELS

The 2-Voice panel is designed to be integrated in the iPassan controller for remotely controlling your intercom system.

The 2-Smart integrated reader is the gateway between the panel and the iPassan system. The door entry panel also comprises a camera, voice synthesis, 12-key keypad and a loop for people with impaired hearing.

The panel complies fully with the Disability Act.

2-SMART DOOR ENTRY PANELS



Key characteristics

- Protocol: 2-wire
- Résistance: IK08 (vandal-proof) and IP54
- Composition: 120° wide angle camera + 4" colour display + sensor + integrated 2-SMART reader
- Voice messages
- Disability Act compliant

Product variations

FD-603-003 | STAINLESS STEEL 2-SMART DOOR ENTRY PANEL

- Front: stainless steel

FD-603-051 | GREY 2-SMART DOOR ENTRY PANEL

- Front: grey zamak (zinc/aluminium alloy)

FD-603-053 | BLACK 2-SMART DOOR ENTRY PANEL

- Front: black zamak (zinc/aluminium alloy)

HOUSING WITH PROTECTIVE HOOD AND HOODS

Housing with protective hoods protect the related 2-SMART door entry panels.

HOUSING WITH PROTECTIVE HOODS



Key characteristics

- Size (L x W x H): 435 mm x 155 mm x 120/65 mm
- Resistance: rain-proof
- Surface-mount

Product variations

UF-500-502 | STAINLESS STEEL HOUSING WITH PROTECTIVE HOOD

- Colour: light grey
- Finish: stainless steel

UF-500-503 | ALUMINIUM HOUSING WITH PROTECTIVE HOOD

- Colour: anthracite grey
- Finish: aluminium

UF-500-504 | ALUMINIUM HOUSING WITH PROTECTIVE HOOD

- Colour: medium grey
- Finish: aluminium

PROTECTIVE HOODS



Key characteristics

- Size (L x W x H): 435 mm x 155 mm x 120/65 mm
- Resistance: rain-proof
- Surface-mount

Product variations

UF-500-505 | STAINLESS STEEL PROTECTIVE HOOD

- Colour: light grey
- Finish: stainless steel

UF-500-506 | ALUMINIUM PROTECTIVE HOOD

- Colour: anthracite grey
- Finish: aluminium

UF-500-507 | ALUMINIUM PROTECTIVE HOOD

- Colour: medium grey
- Finish: aluminium

ABOUT ACCESSORIES

All the accessories you need for:

- ▮ Fixing, powering up and setting up all your access control products
- ▮ Securing and facilitating access to your access controller
- ▮ Configuring credentials
- ▮ Releasing your door manually

SECTION CONTENTS

- ▮ Push buttons
- ▮ Metal enclosures
- ▮ USB ENCODERS and programming terminals
- ▮ Electromagnetic locks
- ▮ Brackets
- ▮ Other accessories

ACCESSORIES



PUSH BUTTONS

FD-500-010 | PUSH BUTTON



- Front size: 100 mm x 60 mm
- Finish: stainless steel
- Laser "Door" inscription: on request
- Double insulated NO/NC contacts
- Wired output
- Mounting: with screws (delivered with tools) without housing

UF-500-250 | NON-ILLUMINATED PUSH BUTTON



- Front size: 100 mm x 40 mm - Thickness: 15/10
- Finish: Brushed 304L stainless steel
- Laser "Door" inscription: yes
- PB type: NO/NC - 19 - non-illuminated
- Wired output
- Mounting: with screws (not supplied)
- Mounting hole: 2 x 4.3 unmilled

GB-500-009 | PUSH BUTTON



- Front size: 40 X 40 mm -
- Finish: stainless steel
- Laser "Door" inscription: on request
- Wired output
- Mounting: on existing base

METAL ENCLOSURES

Metal enclosures are designed to simplify iPassan system installation. They provide easy access to the equipment for servicing purposes and reduce on-site time as part of the cabling may be prepared in advance.

FD-500-499 | 2-MODULE METAL ENCLOSURE



- Size: 456 mm x 342 mm x 100 mm
- Weight: 5.4 kg
- Power supply: 13.8VDC 7A - Backup supply possible
- Paint: RAL 9003 white
- Cable entries: 6 pre-drilled holes on each side + 4 on top and bottom.
- Protection rating: IP 50
- Tampering and opening detection: switch on door and on the back of the enclosure

FD-500-500 | 4-MODULE METAL ENCLOSURE



- Size: 456 mm x 505 mm x 100 mm
- Weight: 7.4 kg
- Power supply: 13.8VDC 7A - Backup supply possible
- Paint: RAL 9003 white
- Cable entries: 6 pre-drilled holes on each side + 4 on top and bottom.
- Protection rating: IP 50
- Tampering and opening detection: switch on door and on the back of the enclosure

USB ENCODERS AND PROGRAMMING TERMINALS

FD-500-575 | USB ENCODER



- iPassan - Easy Door Controller encoder
- 13.56 MHz encoders are designed to read Mifare® keys/passes and cards.
- For programming keys with Easy Door Controller numbers
- Uploads the CSN characters to the iPassan Manager software when the key is placed on the encoder (prevents input errors)
- Connected to the PC via a USB cable (supplied) and used with our free web software: www.easydoorcontroller.com or www.ipassan.com
- Also included in the GB-140-170 Easy Door Controller Starter kit

GB-500-498 | USB UNIVERSAL ENCODER



- 13.56 MHz encoders are designed to read Mifare® keys/passes and cards. They can display their number in Windows environments (Word, Excel, Notepad, etc.) and their shape is optimized to enable optimal key reading.
- Size (L x W x H): 135 mm x 118 mm x 34 mm
- Weight: 210 g without cabling or packaging
- Power supply: USB
- Communication; USB cable included (1.80 m)
- Frequency: 13.56 MHz (Mifare®)
- Status indicator: green/red dual-colour LED
- Operating temp.: 0°C to 55°C - Storage temperature: 0°C to 55°C

GB-500-123 | PROGRAMMING TERMINAL



- Size (L x W x H): 100 mm x 180 mm x 40 mm
- Weight: 900 g
- Power supply: battery and charger supplied
- Display: LCD

ELECTROMAGNETIC LOCKS

Electromagnetic locks comprise:

- 1 electromagnetic lock
- 1 back plate
- 1 self-adhesive template for fixing the back plate
- 1 bag with 8 screws, 2 Allen wrenches, 3 washers, 2 centring pins, 1 plate screw and 1 hexagonal knob.

FD-500-227 | MORTICE-MOUNT ELECTROMAGNETIC LOCK - 300 KG



- Lock size (L x W x H): 226 mm x 38 mm x 26.5 mm
- Back plate size (L x W x H): 180 mm x 38 mm x 11 mm
- Restraining force: 300 kg (600 lbs)
- Standard: CE
- Power supply: 12 VDC / 24 VDC
- Consumption: 12 VDC = 480 mA | 24 VDC = 240 mA

FD-500-228 | LED SURFACE-MOUNT ELECTROMAGNETIC LOCK - 300 KG



- Lock size (L x W x H): 250 mm x 42 mm x 25 mm
- Back plate size (L x W x H): 180 mm x 38 mm x 11 mm
- Restraining force: 300 kg (600 lbs)
- Standard: CE
- Power supply: 12 VDC / 24 VDC
- Consumption: 12 VDC = 480 mA | 24 VDC = 240 mA
- Integrated LED and NO/NC contact

FD-500-229 | LED SURFACE-MOUNT ELECTROMAGNETIC LOCK - 500 KG



- Lock size (L x W x H): 266 mm x 67 mm x 39 mm
- Back plate size (L x W x H): 180 mm x 60 mm x 13 mm
- Restraining force: 500 kg (1,000 lbs)
- Standard: CE
- Power supply: 12 VDC / 24 VDC
- Consumption: 12 VDC = 420 mA | 24 VDC = 210 mA
- Integrated LED and NO/NC contact

BRACKETS

Brackets are designed for mounting locks on doors or directly on the door frame. They can be:

- ┆ L-shaped: To enable mounting on the door frame
- ┆ Z- & L-shaped: (L-shaped brackets with a Z) - To mount the back plate on the door and the lock on the door frame.

60-001-067 | Z&L-SHAPED BRACKET KIT - 500 KG



- ┆ L size (H x L x D - Th.): 265 mm x 73 mm x 45 mm - 7 mm
- ┆ Size of part 1 of the Z (H x L x D - Th.): 185 mm x 70 mm x 61 mm - 6 mm
- ┆ Size of part 2 of the Z (H x L x D - Th.): 185 mm x 70 mm x 61 mm - 6 mm
- ┆ Weight: 1.75 kg
- ┆ Restraining force: 500 kg (1,000 lbs)

60-001-068 | Z&L-SHAPED BRACKET KIT - 300 KG



- ┆ L size (H x L x D - Th.): 250 mm x 48 mm x 29 mm - 5 mm
- ┆ Size of part 1 of the Z (H x L x D - Th.): 180 mm x 50 mm x 50 mm - 5 mm
- ┆ Size of part 2 of the Z (H x L x D - Th.): 180 mm x 50 mm x 50 mm - 5 mm
- ┆ Weight: 0.95 kg
- ┆ Restraining force: 300 kg (600 lbs)

60-001-069 | L BRACKET - 500 KG



- ┆ Size (H x L x D - Th.): 266 mm x 73 mm x 45 mm - 7 mm
- ┆ Weight: 0.55 kg
- ┆ Restraining force: 500 kg (1,000 lbs)

60-001-070 | L BRACKET - 300 KG



- ┆ Size (H x L x D - Th.): 250 mm x 47 mm x 29 mm - 5 mm
- ┆ Weight: 0.3 kg
- ┆ Restraining force: 300 kg (600 lbs)

OTHER ACCESSORIES

70-000-457 | IPASSAN 12V/1A POWER SUPPLY

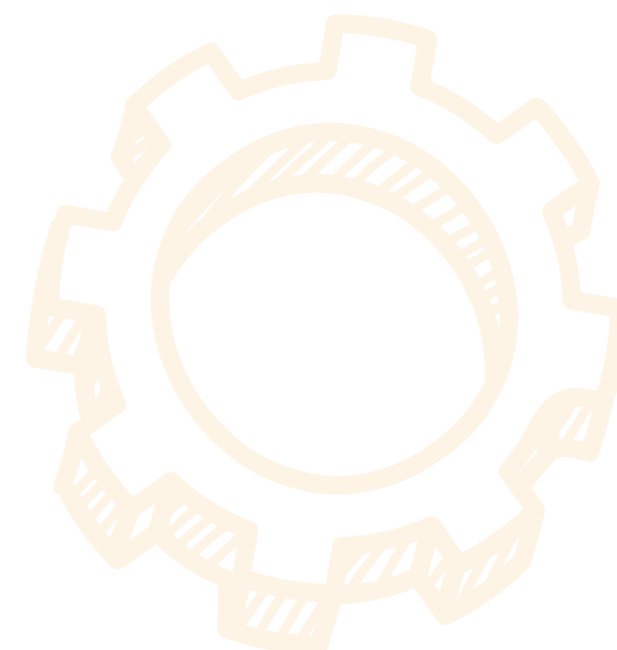


- ┆ Size (H x L x D): 97 mm x 17 mm x 70 mm
- ┆ Power supply: 12 VCC - 1A - regulated and filtered
- ┆ Mounting: on a DIN rail (1 module)
- ┆ Terminal cover: included - Class 2
- ┆ Suitable for: iPassan controller

FD-500-036 | STILUS ANTENNA



- ┆ Frequency: 868 MHz
- ┆ Helps improve radio reception





CONTACT

CONTACT

VISIT **FDI** ON...



www.fdi-access.com/en/
#FriendlyAccess

YOUR **FRIENDLY** POINTS OF CONTACT



IN FRANCE
Maxime ROTTIER
Business Developer
+33 (0)6 08 63 27 62



INTERNATIONALLY
Pierre MERLET
Export Manager
+33 (0)6 30 71 26 66

FDi
URMET GROUP | Friendly
Development
& Innovation

110 rue Pierre Gilles de Gennes,
ZAC Cormier 5
49300 CHOLET (FRANCE)

+33 (0)2 51 61 69 69
sales@fdi-access.com



SCAN ME





+33 (0)2 51 61 69 69
sales@fdi-access.com

